



WiFi 2.4GHz PCB Board Antenna

Model: CS CS2-Q24N01

1. Introduction

This antenna is an embedded antenna with high efficiency and quick integration for 2.4GHz frequency band, including Bluetooth and Wi-Fi. It has a peak gain of 2.0dBi at 2.4GHz, designed in a PCB with IPEX connector and RF-1.13 cable, which both can be customized.

Dipole antennas offer the advantage of receiving balanced signals.

Embedded Wireless Systems, For World-wide Use, Vertical Polarization. Electrical connection with the FPC is accomplished by soldering the silver pin through the hole on the PCB.

Compact, ideally suited for stealth applications. Built-in ground plane to allow mounting anywhere.

Cable lengths and connectors are fully customizable.

For good efficiency performance the shortest cable length should however not be less than 100mm.





2. Specification

Electrical

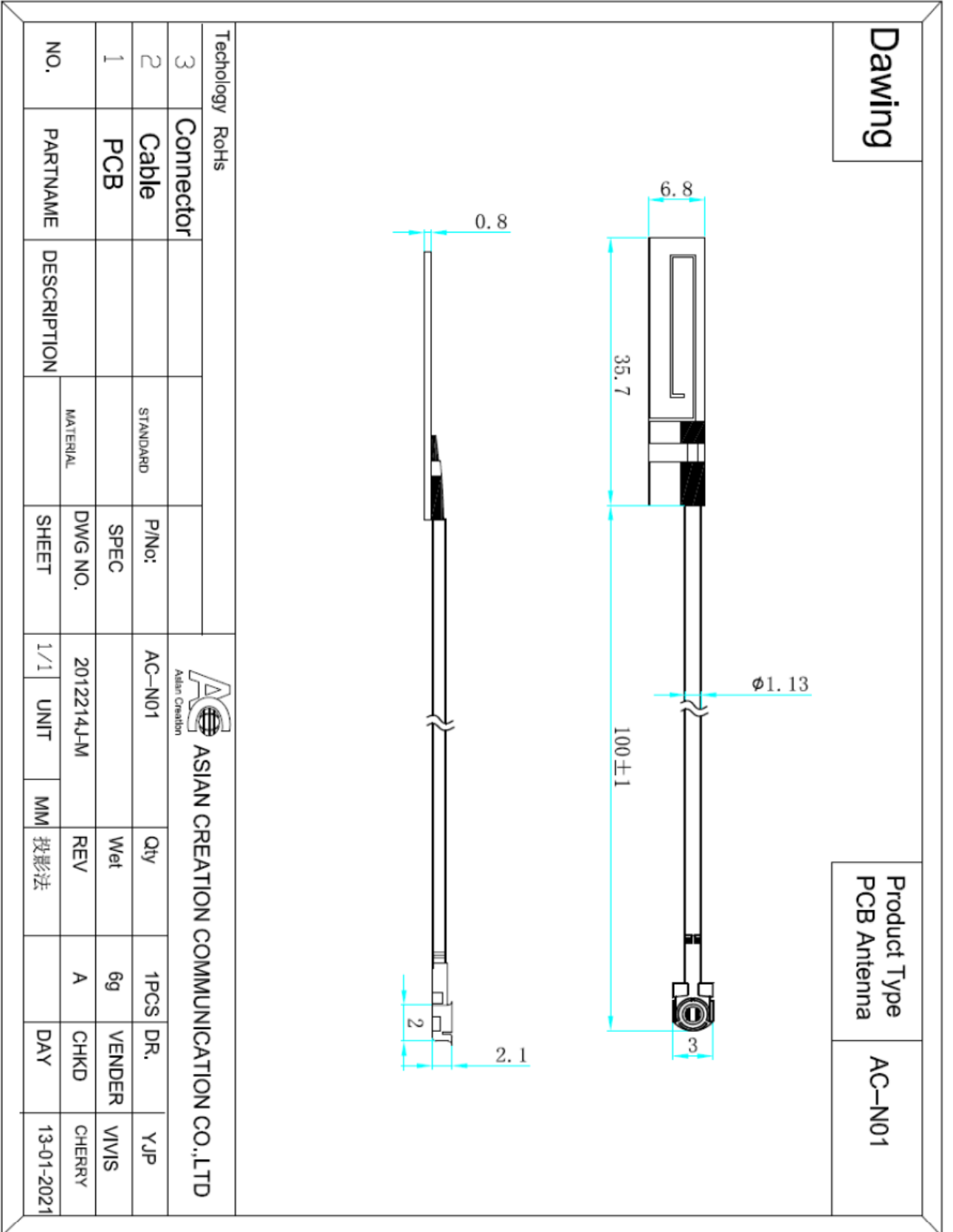
Frequency Range	2400-2483MHz
Band width	83MHz
Gain	2.15dBi
V.S.W.R	≤2.0
Maximum Input Power	50W
Impedance	50Ω
Connector	IPEX
Cable Type	1.13
Cable Length	10cm
Antenna Radome Material	FR4

Mechanical

Dimensions	35.7x6.8x0.8mm
Weight	5g
Operating Temperature	-40°C to+70°C
RoHS Compliant	YES



3.Drawing





4.V.S.W.R

